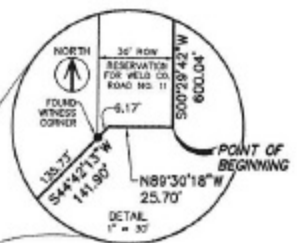
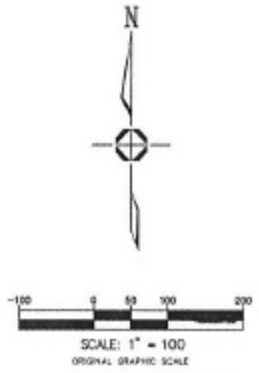
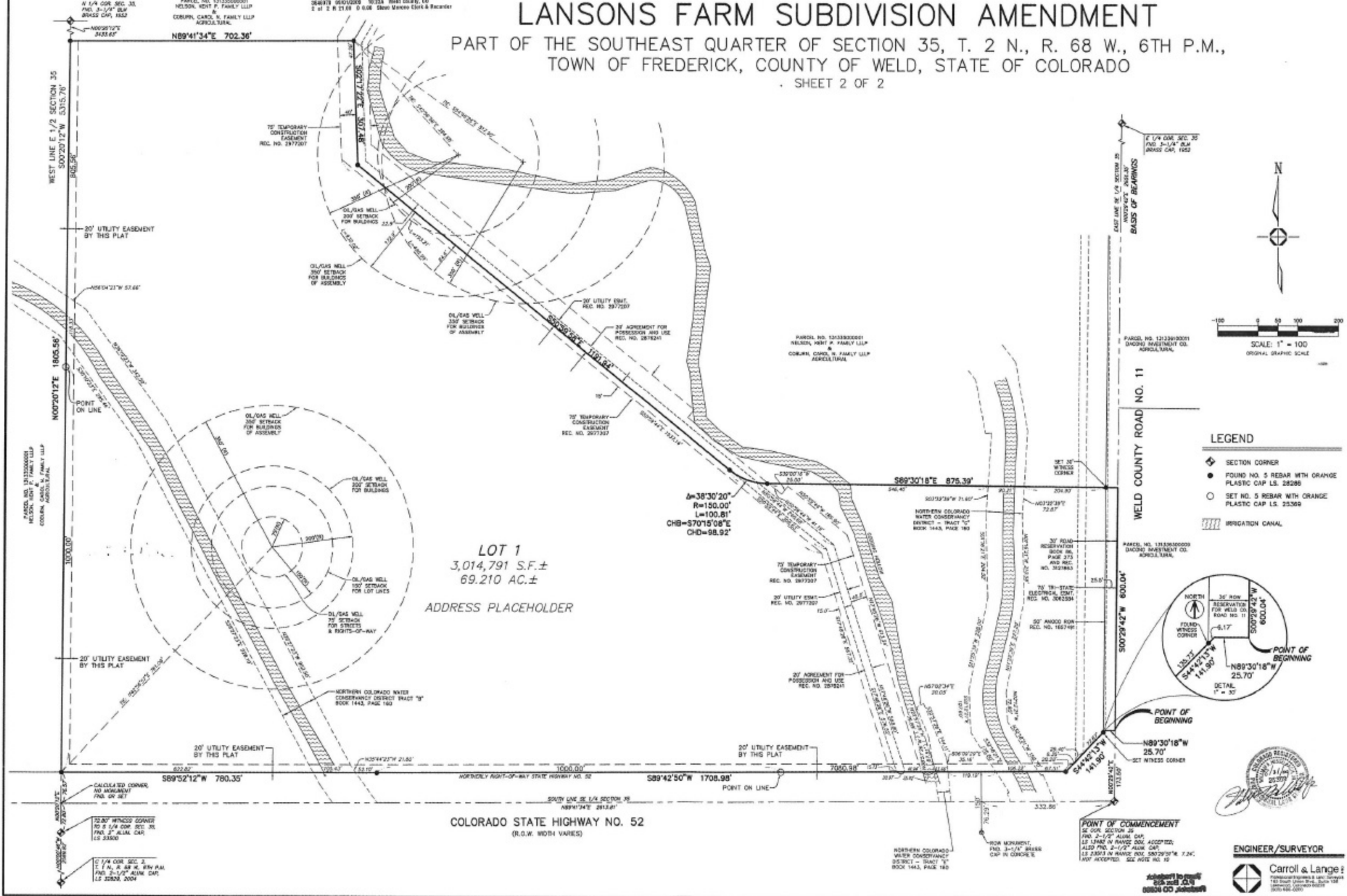


LANSONS FARM SUBDIVISION AMENDMENT

PART OF THE SOUTHEAST QUARTER OF SECTION 35, T. 2 N., R. 68 W., 6TH P.M.,
TOWN OF FREDERICK, COUNTY OF WELD, STATE OF COLORADO

SHEET 2 OF 2



ENGINEER/SURVEYOR

